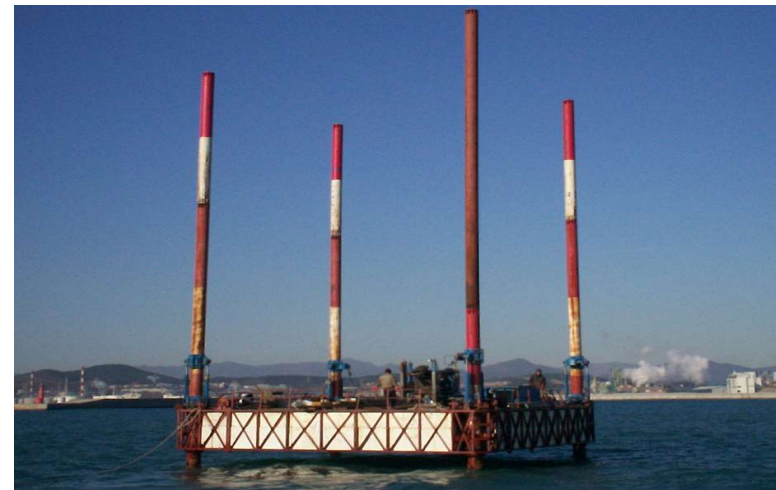
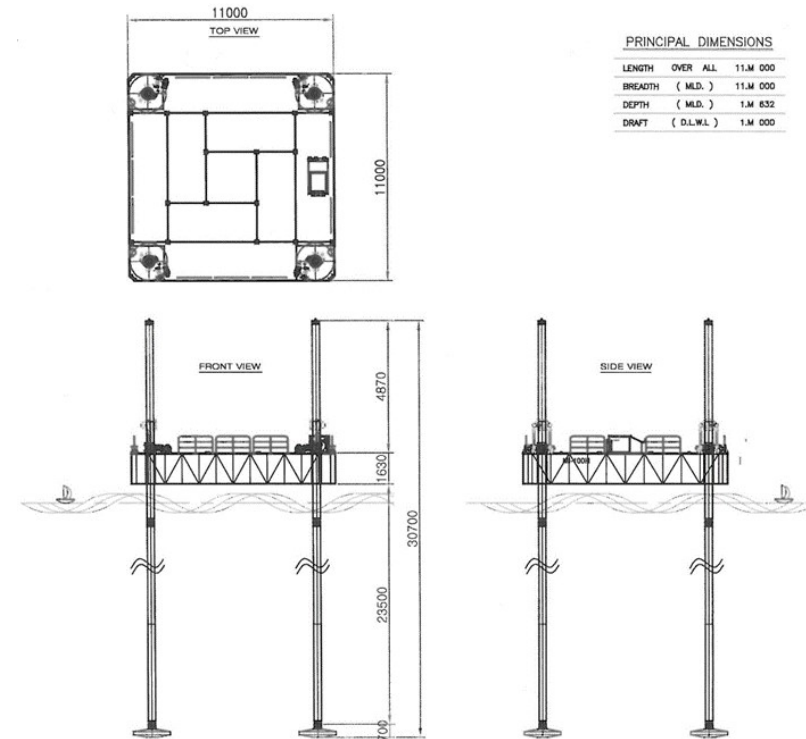


구분	보유 대수	선명	규격 (가로×세로×높이) (m)	Leg(m)	etc
S.E.P	4		11m × 11m × 1.8m	33m (11×3개)	임대
		101	11m × 11m × 1.8m	33m (11×3개)	
		102	12m × 12m × 1.8m	33m (11×3개)	
		103	16m × 21m × 2.3m	42m	
Pontoon	2		10m × 6m × 0.7m		
			11m × 6m × 0.7m		
MP roll	1				

연합101,102호, 관리barge

PRINCIPAL SECIFICATION		
Main Dimension		
Length	11.0 m ~ 12.0 m	
Width	11.0 m ~ 12.0 m	
Depth	1.8 m	
Leg Length	33.0 m	
Leg Dia	0.400 m ~ 0.450 m	
Oerating Condition		
Wind velocity	15 m/sec	
Maximum height of wave	1.5 m	
Current velocity	1.5 knot	
Workiing Condition		
Area of Work Table	10×11 m	
Maximum Sea Depth	25 m	
Working Road(max)	12 ton	
Power Pack		
Main pump Engine	1	130ps/1800rpm
Jenerator	1	
Main Pump	1	T6CC-014-010 DENISON
Time for lift up		30m/h×1800rpm
Time for lift down		27m/h×1800rpm
Mooning System		
Winches	4	1 Drum, 4 ton
Ancoors	4	0.15 ton
moon pool	1	2.2(W)×2.2(L)/m



연합103호

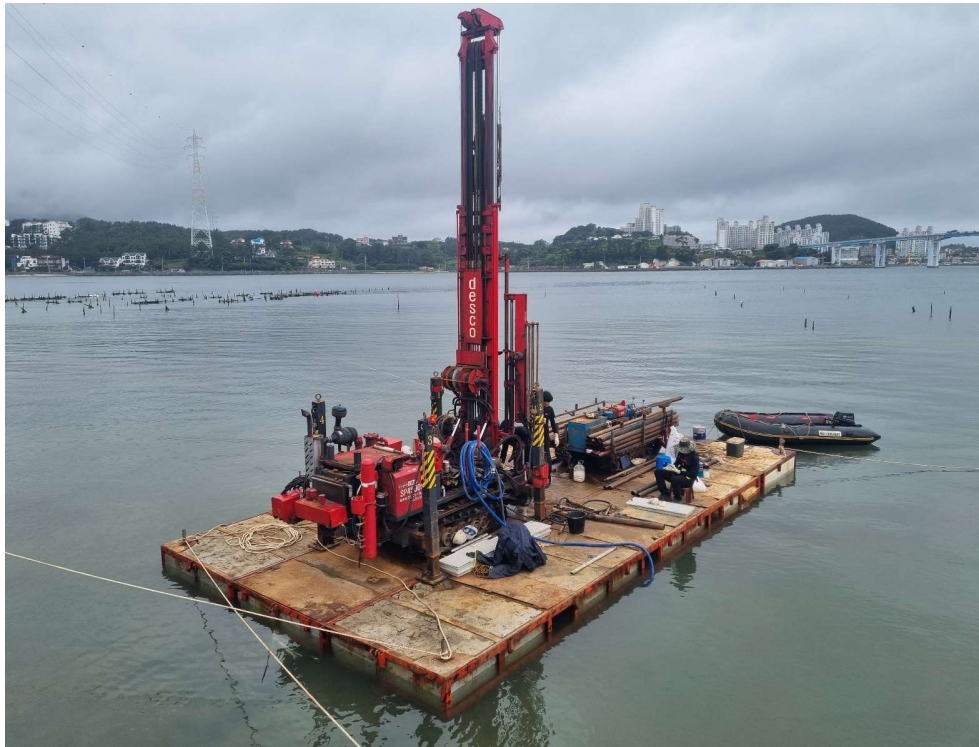
Particulars of the Jack Up Barge

Official No.	BSB-032735
Port of Registry	Busan, Korea
Gross Tonnage	115.0 tons
Dimension (L × B × D)	20.93×15.80×2.28 m
Leg Length	42.0 m
Classed with	NIL
Built in/at	2003 / Incheon, Myungil
Owners	Yeonhab Geology Co
Descriptions	All steel welded S.E.P. barge



PONTOON BARGE 1

Dimension (L × B × D)	11.0 m × 6.0 m × 0.65 m
Assembly	4-stage
Dimension(3-stage)	9.0 m × 2.0 m × 0.65 m
Dimension(1-stage)	6.0 m × 2.0 m × 0.65 m



PONTOON BARGE 2

Dimension (L × B × D)	10.0 m × 6.0 m × 0.65 m
Assembly	3-stage
Dimension(3-stage)	10.0 m × 2.0 m × 0.65 m

